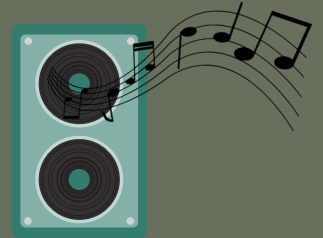


HOUSE RULES

It is important that you comply with the House Rules

NOISE AND DISTURBANCES IN THE HOME

You are not allowed to play music in your apartment or otherwise behave in a way that disturbs your neighbors. If you are planning a party, we recommend that you inform your neighbors in advance and encourage them to let you know if they are disturbed.



NAILING AND DRILLING

You are not allowed to nail, drill, or perform other disturbing work in your apartment between 8:00 PM and 7:00 AM on weekdays, and between 8:00 PM and 10:00 AM on Saturdays, Sundays, and public holidays.

SMOKING

Smoking is prohibited in the apartment, the building's common areas, and outside the entrance door. Please also be considerate of your neighbors if you choose to smoke on your balcony or patio. Smoking in the apartment can cause the ventilation system in the entire building to shut down. The smoking ban in Sweden also applies to public playgrounds and outside premises accessible to the public.



The new law also applies to e-cigarettes.

Thank you for your consideration!



TURN ON THE WATER

Avoid flushing water between 11:00 PM and 6:00 AM.

PARKING

Park vehicles only in designated parking spaces.





PETS

Keep an eye on your pet(s) so that they do not disturb your neighbors or pollute playgrounds, garden areas, or other parts of the property. Pets are not allowed to roam freely on the premises.

FOOD FOR ANIMALS

You are not allowed to put out food for animals on the property. This also applies to the courtyard.

THE BUILDING

The tenant shall exercise due care and maintain both their rented apartment and the common areas of the property in good condition.



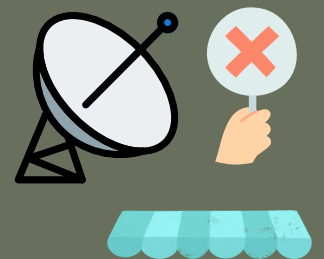
INSTALLATION OF HOUSEHOLD APPLIANCES



You must have special permission from the landlord to install a washing machine, dishwasher, or kitchen fan. The installation must always be carried out professionally.

SATELLITE DISHES, SIGNS, AND AWNINGS

It is prohibited to install satellite dishes, signs, or awnings.



OBJECTS IN THE ENTRANCE AREA AND STAIRWELL

To ensure clear escape routes in case of emergencies such as fire, you are not allowed to place items in the entrance, stairwell, walkways, attic corridors, or basement passages.



FIXED FURNISHINGS AND EQUIPMENT

Clean up after yourself and leave the laundry room in the same condition as when you arrived. Carpet washing and textile dyeing are not allowed.



GARBAGE

Dispose of your household waste and sort recyclables at the designated place. If there is no container in the waste room for the specified material or item, it must be taken to the recycling center (Brista Recycling Center, Returvägen 22).



FIXED FURNISHINGS AND EQUIPMENT

You must have special permission from the landlord to make changes to the apartment's fixed furnishings and equipment. This also applies to the apartment's water, heating, and electrical systems.



BALCONY, PATIO, AND WINDOWS

Keep your outdoor area free of snow and ice. Do not leave windows and doors open to prevent water and freeze damage. Avoid storing flammable materials on your balcony or patio.

SCENT BLOCKS IN THE TOILET

Do not use scent blocks as they can get stuck in the toilet. To clear a blockage, high-pressure flushing is performed, and sometimes the toilet must be unbolted and then reinstalled. In other words, a small scent block can cause a major repair effort, the cost of which you as a tenant will be responsible for, even though it should be covered by your home insurance.



DO NOT POUR LIQUIDS DOWN THE DRAIN

You are not allowed to flush liquids (such as cooking oil) that can cause blockages down the drain in the kitchen sink, bathroom sink, or toilet. Ask your property manager if you are unsure.

GRILLING

Grilling is not allowed on balconies and patios.



REPORT FAULTS AS SOON AS POSSIBLE

You are obliged to report any faults or defects that occur in the apartment to the landlord as soon as possible. This also applies if you discover pests or vermin.



You can submit a fault report on Fastpartner's website:
www.fastpartner.se.

HEMFÖRSÄKRING

Som hyresgäst hos Fastpartner förbinder du dig att teckna hemförsäkring att gälla under hela hyres perioden.



APPENDIX

This document belongs to the apartment and must be left for the next tenant.



CONTACT

switchboard: 08 402 34 60
www.fastpartner.se

[This brochure is available for download from Fastpartner's website.](http://www.fastpartner.se)